

# Industry and Employment - Bridgewater, NH

Industry Name	▼ Bridgewater, NH	Counties Grafton County	States New Hampshire	Entire Country United States
Construction	16%	8%	8%	7%
Health Care & Social Assistance	13%	18%	16%	15%
Educational Services	12%	19%	10%	10%
Manufacturing	10%	10%	14%	11%
Admin, Support, Waste Management Services	8%	3%	4%	4%
Retail Trade	7%	10%	11%	10%
Accommodation & Food Services	7%	5%	4%	6%
Finance & Insurance	5%	3%	5%	5%
Professional/Scientific/Tech Services	5%	6%	8%	8%
Public Administration	5%	3%	4%	5%
Transportation & Warehousing	4%	2%	3%	5%
Real Estate	3%	2%	2%	2%
Other Services (excl Public Administration)	3%	5%	4%	5%
Wholesale Trade	1%	1%	2%	3%
Information	1%	1%	2%	2%
Arts, Entertainment & Recreation	1%	1%	1%	2%
Agriculture, Forestry, Fishing, Hunting	0%	2%	1%	1%
Mining, Quarrying, Oil & Gas Extraction	0%	0%	0%	1%
Utilities	0%	0%	1%	1%
Management of Companies/Enterprises	0%	0%	0%	0%

## Employment



60%  
White Collar



24%  
Blue Collar



17%  
Services

16.3%

Unemployment  
Rate

## Businesses



46

Total Businesses



244

Total Employees

7%

No High School  
Diploma



27%

High School  
Graduate



23%

Some College



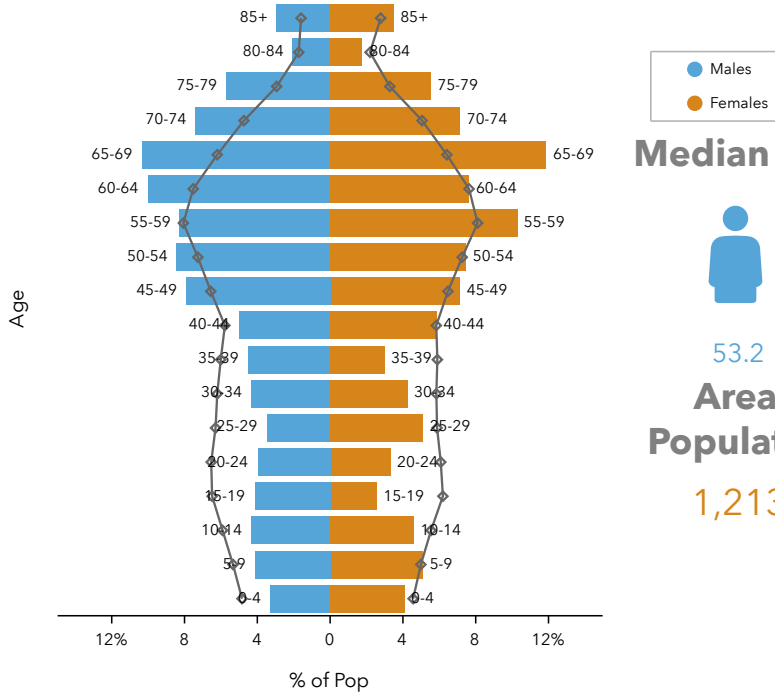
43%

Bachelor's/Grad/Prof Degree

## Educational Attainment

# Population and Age - Bridgewater, NH

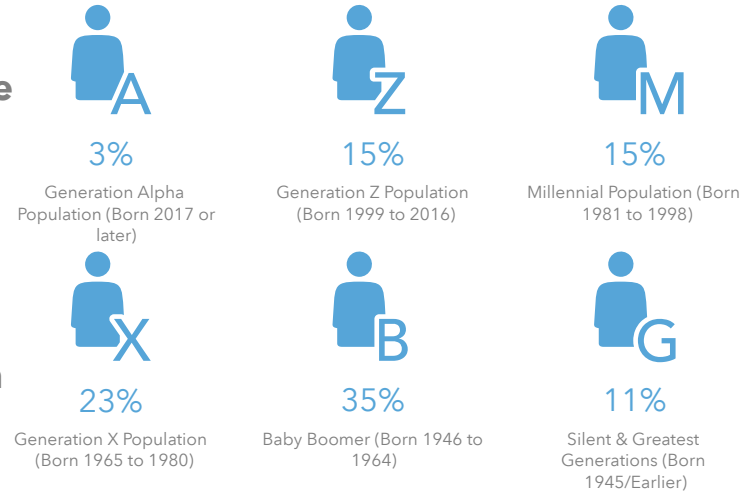
## Age Pyramid



Dots show comparison to New Hampshire

Population Group	Growth Rate
2000-2010 Population: Annual Growth Rate (U.S. Census)	1.07%
2010-2020 Population: Annual Growth Rate (Esri)	1.11%
2020-2025 Population: Annual Growth Rate (Esri)	0.91%

## 2020 Generational Makeup



## Median Age




53.2

## Area Population

1,213

## Tapestry Segments



**6E** **Rural Resort Dwellers**

534 households

**100.0%**

of Households

# Housing - Bridgewater, NH

## Housing Statistics



\$292,254

Median Home Value



\$10,977

Average Spent on Mortgage & Basics



\$720

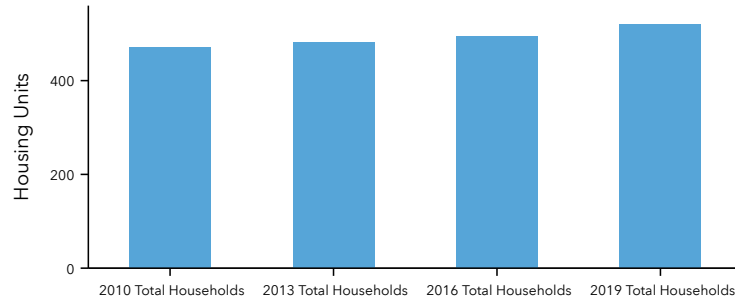
Median Contract Rent



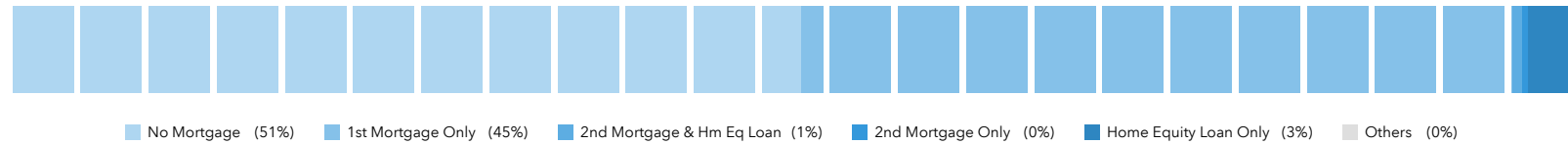
2.27

2020 Average Household Size (Esri)

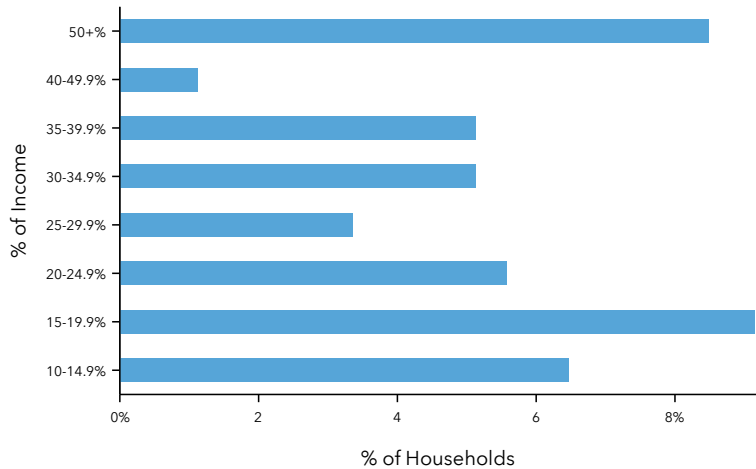
## Total Households 2010 -2019



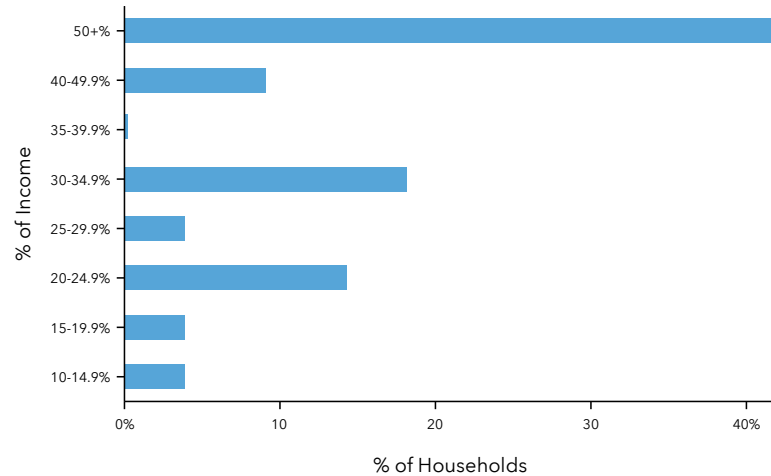
## Mortgage Spectrum



## Mortgage Payments as a % of Income



## Rent as a % of Income



# Income - Bridgewater, NH

## 2020 HH Net Worth



\$234,842

Median Net Worth



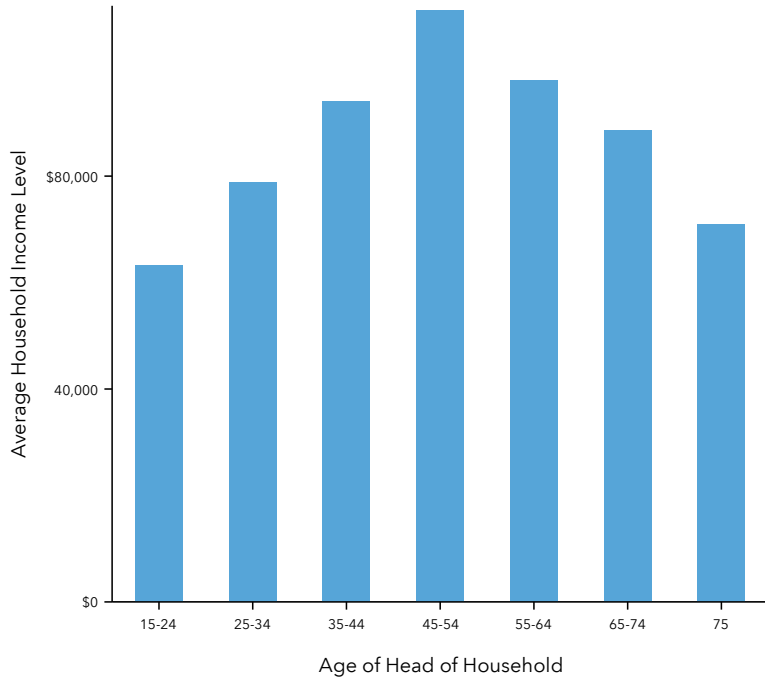
\$1,198,959

Average Net Worth

## Income Statistics

	Bridgewater, NH	Counties Grafton County	States New Hampshire	Entire Country United States
2020 Per Capita Income	\$40,246	\$38,150	\$39,400	\$34,136
2020 Median Household Income	\$63,615	\$65,194	\$75,181	\$62,203
2020 Average Household Income	\$91,420	\$89,407	\$98,779	\$90,054

## 2020 Income by Age



## 2020 Household Income

